
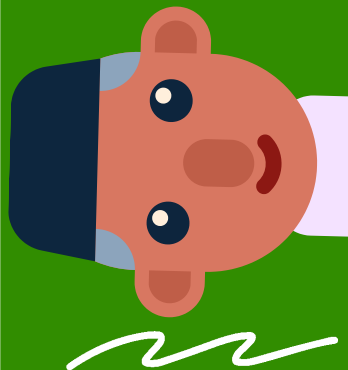


What's  
Schoolinks?



What  
classes  
should I  
take?



# COURSE SELECTION

FOR CURRENT CJH STUDENTS



What if I  
want to play  
sports?



What  
elective  
can I take?



# COURSE SELECTION PROCESS

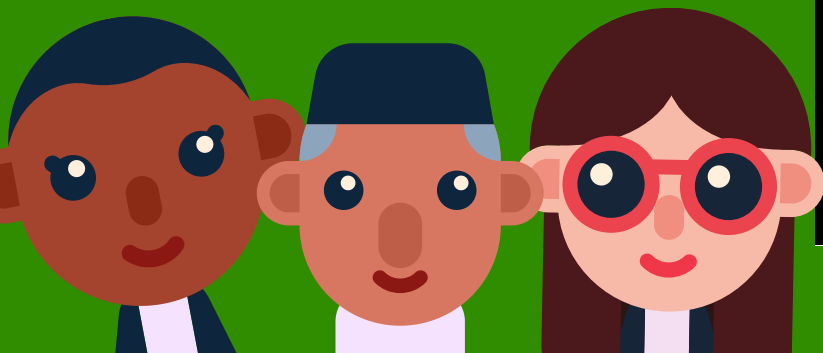

2024-2025

February 5th - February 19th:  
SchoolLinks will be open for students to complete course selections.

February.  
During the month of February, we will meet with students individually to ensure they're courses have been entered correctly.

After Spring Break, you will have one final chance to look at your students choices & inquire about changes.

REMEMBER: Course Selection is designed so that we can place your students in the classes that they want, but we must consider the BEST placement for them. What they choose may not be the final class that they are assigned, but we will do our best to honor their wishes and factor in any thing that will impact their learning. (SPED, 504, etc.)





# THINGS TO THINK ABOUT

## KAP or NO KAP?

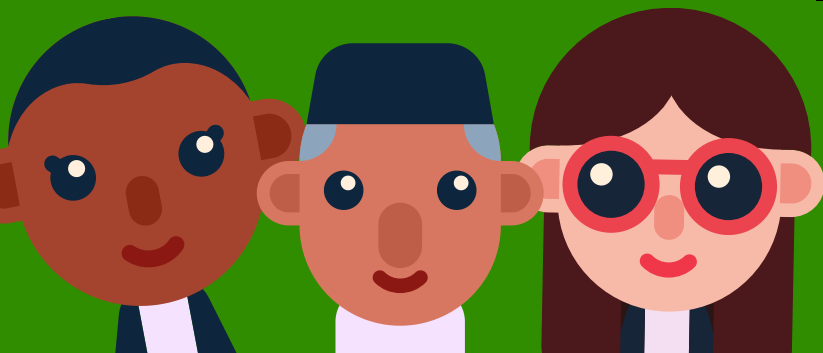
KAP is a more challenging course, fast-paced, and more homework.

## PE or ATHLETICS?

PE is something that EVERYONE can take. Athletics is aimed at students wanting to get stronger while playing sports. You can sign up, but remember all sports, except football will have tryouts.

## ELECTIVES:

Be sure to sign up for something that interests YOU. Don't be afraid to try something new! When you select your alternates, be sure to select courses that you would be okay taking, if your first choice didn't work.



# 6TH GRADE COURSES

## REQUIRED CORE CONTENT

All core courses are offered as Academic or KAP.

- Reading Language Arts
- Math
- Science
- Social Studies

## REQUIRED COURSE

- Physical Education
- If failed STAAR:
  - Reading Elective
  - Math Lab

## ELECTIVE CHOICES

- Art I
- Girls/Boys Choir
- Theatre I
- Orchestra I
- Band I
- Leadworthy Intermediate

## Possible Courses for Special Programs (SPED/504/HB1416/ETC)

- Reading Elective
- Math Lab
- Dyslexia Course

# 7TH GRADE COURSES

## REQUIRED CORE CONTENT

All core courses are offered as Academic or KAP.

- Reading Language Arts
- Math
- Science
- Social Studies

## REQUIRED COURSE

- Physical Education
- OR
- Athletics
  - If failed STAAR:
    - Reading Elective
    - Math Lab

## ELECTIVE CHOICES

- Art I, Art II
- Girls Choir I, Girls Choir II
- Boys Choir I, Boys Choir II
- Theatre I, Theatre II
- Orchestra I, Orchestra II
- Band I, Band II
- Leadworthy Intermediate
- Leadworthy
- Career Explorations
- Touch Systems Data Entry and Web Communications
- Publications

## Possible Courses for Special Programs (SPED/504/HB1416/ETC)

- Reading Elective
- Math Lab
- Dyslexia Course

# 8TH GRADE COURSES

## REQUIRED CORE CONTENT

All core courses are offered as Academic or KAP.

- Reading Language Arts
- Math
- Science
- Social Studies

## REQUIRED COURSE

- Physical Education
- OR
- Athletics
- OR
- Dance
  - If failed STAAR:
    - Reading Elective
    - Math Lab

## ELECTIVE CHOICES

- Art I, Art II, Art III
- Girls Choir I, Girls Choir II, Girls Choir III
- Boys Choir I, Boys Choir II, Boys Choir III
- Theatre I, Theatre II, Theatre III
- Orchestra I, Orchestra II, Orchestra III
- Band I, Band II, Band III
- Leadworthy Intermediate
- Leadworthy
- Career Explorations
- Peer Assistance Leadership (PALS)
- Student Aide
- Publications

## Possible Courses for Special Programs (SPED/504/HB1416/ETC)

- Reading Elective
- Math Lab
- Dyslexia Course

## High School Credit Options

- HS Art I
- Touch Systems Data Entry and Web Communications
- Spanish
- Spanish for Spanish Speakers
- Principles of Human Services
- Principles of Applied Engineering

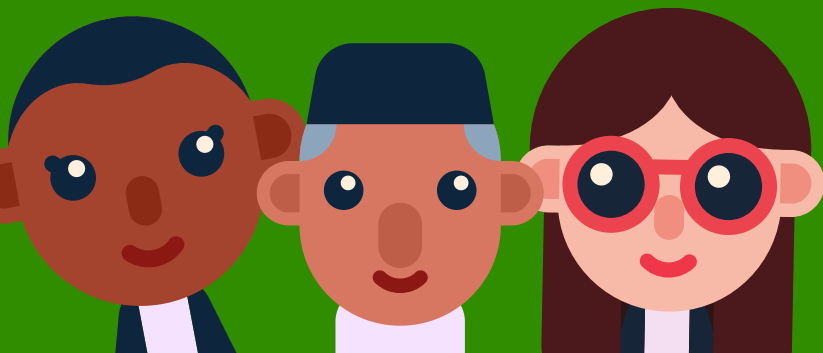
# CHOOSING AN ELECTIVE

When choosing your elective, REMEMBER, you will select 3 alternates. Make sure that your alternates are things that you WANT to take.

If you have previously taken an elective in 6th or 7th grade, we will plan to continue your path in the class. For example, if you are in Art I and liked it, we will move you to Art 2.

7th graders going to 8th. Remember, you will have a second elective. Math and Reading Lab will be our first priority. Then your selected choice.

We cannot make schedule changes for 800+ students when the year begins. So choose your alternates wisely. If its listed as an alternate we will put you in that course!



# STEPS YOU & YOUR STUDENT WILL NEED TO TAKE!

## WHERE TO ACCESS SCHOOLINKS

In order for students to select their courses, they will first need to log into SchoolLinks & complete the steps to Onboard. They appear like surveys for students.



## SUBMIT COURSE SELECTIONS BY: FEBRUARY 19TH!

Once students have logged in and completed onboarding, they are able to complete and SUBMIT their course selection. We must receive the online submission & their planning sheet.

**DON'T  
FORGET**

